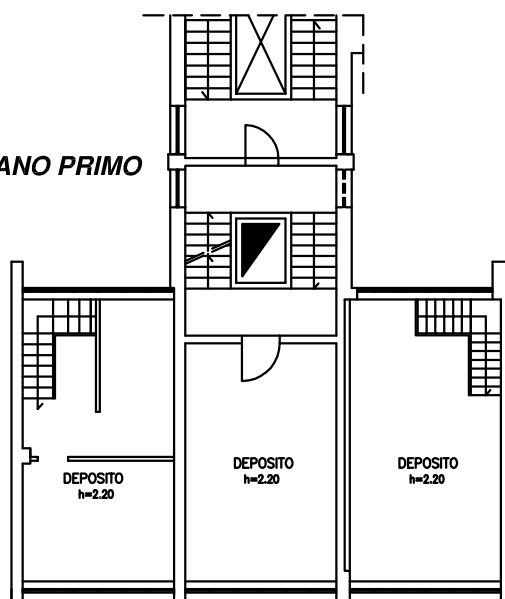


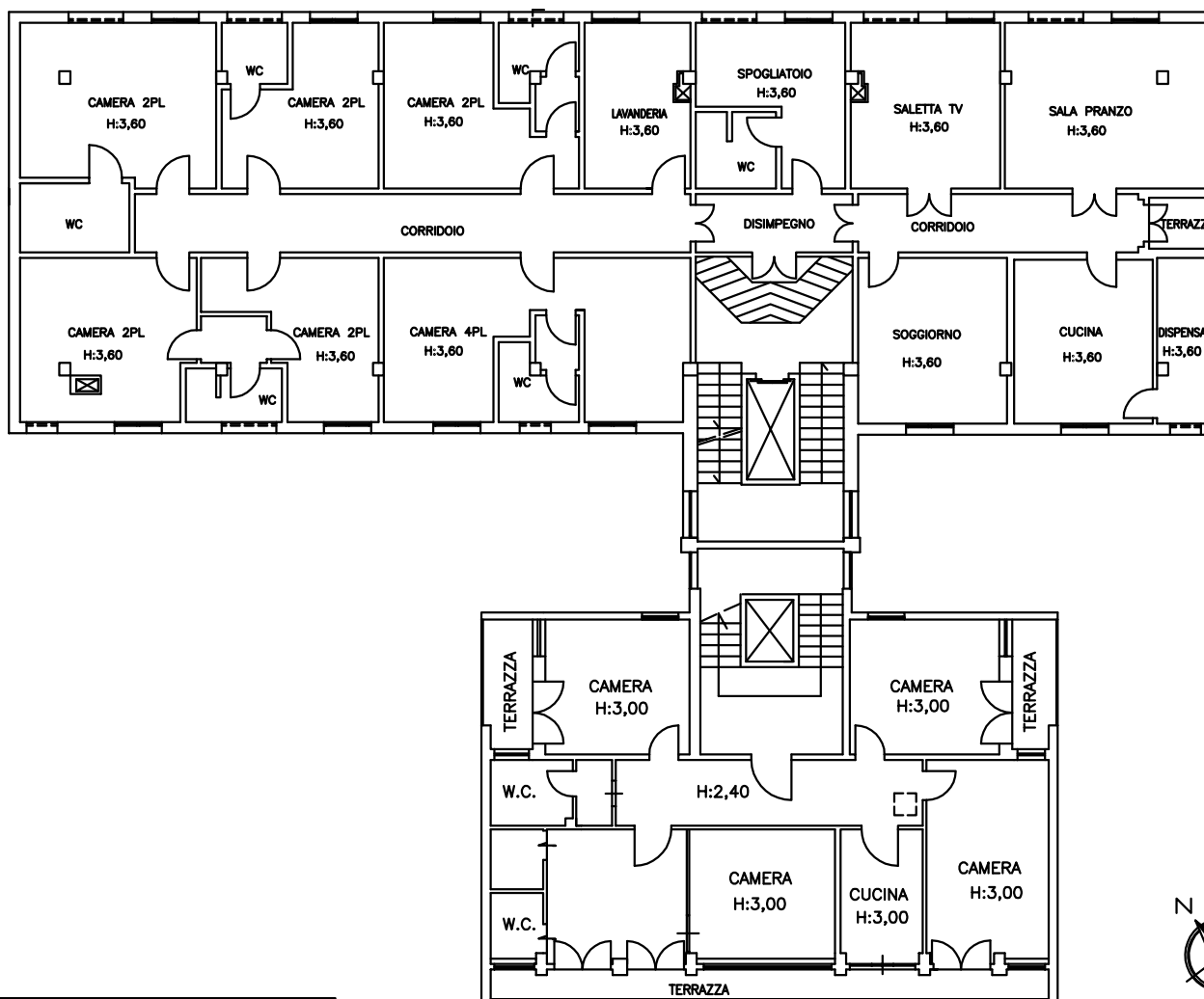
**PLANIMETRIA IMMOBILE POSTO IN FIRENZE, VIA BARACCA
NN°150/C/D/E/F/G/H/I, ANGOLO VIA PIETRI NN°1-3.**

PIANO AMMEZZATO TRA PIANO TERRENO E PIANO PRIMO



26 NOVEMBRE 2009 - SCALA 1:200

PIANO PRIMO



10 DICEMBRE 2009 - SCALA 1:200